

DW Tower

Coverage Analysis Thompson Ledge



Existing Commnet, and Proposed Thompson Ledge



November

30

2020



Boulder, Utah

DW Tower analysis



Engineering Wireless Services (EWS) has been hired by DW Tower to analyze two Wireless Tower locations for the Town of Boulder, Utah (Garfield County).

Commnet Tower Existing

37° 54' 30.63"N 111° 25' 19.0"W

45' predicted height

The lower elevation of the Commnet tower does show reduced coverage along Highway 12.

Thompson Ledge Proposed

37° 53' 52.92"N 111° 25' 10.63"W

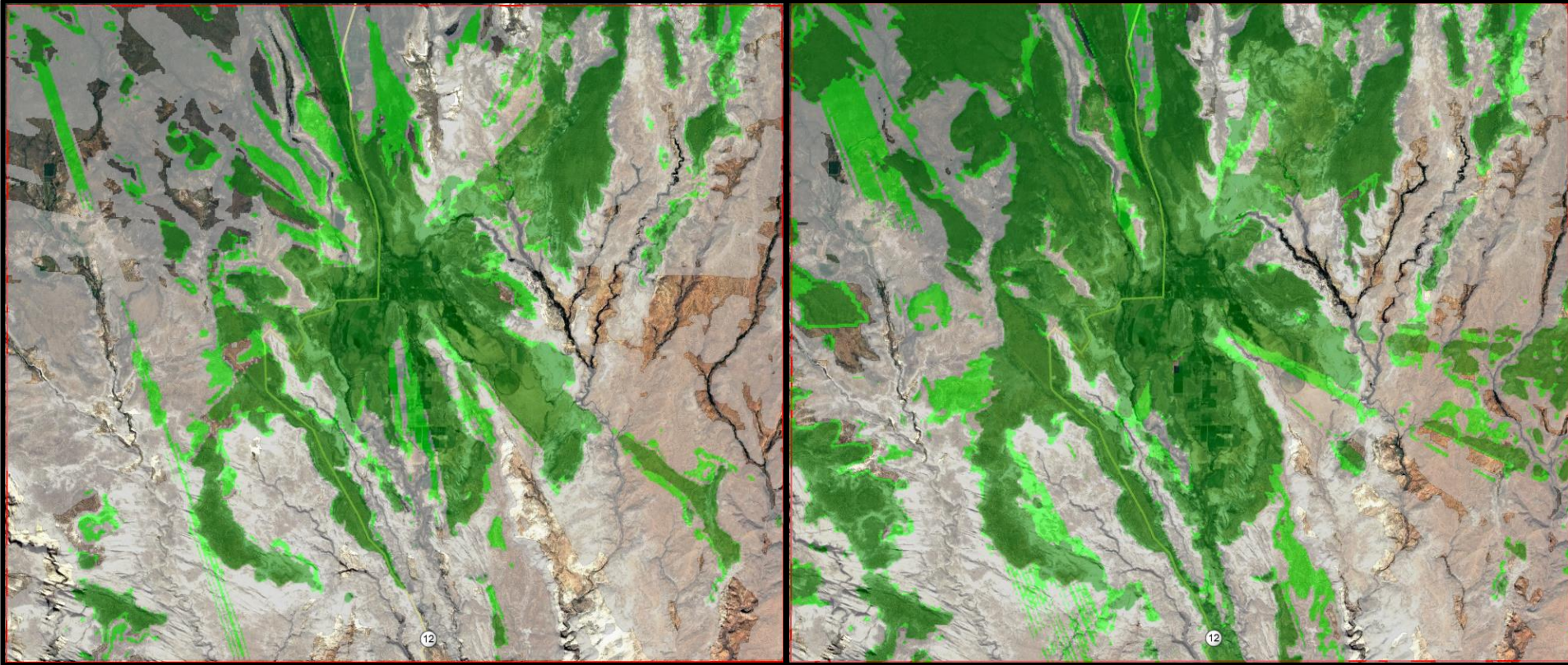
45' predicted height

The higher elevation of Thompson Ledge provides nearly 40% more coverage than Commnet. (3 to 4 Bars on your phone)

Coverage Comparison

Commnet Tower 45' RC AMSL 6700'

Thompson Ledge 45' RC AMSL 6,888 (+188')



Phone bars	Color	Thompson Ledge	Boulder Commnet
4 to 3 bars	■	31.50%	17.29%
3 to 0 bars	■	9.88%	7.64%
1 to 0 bars	■	41.10%	45.13%

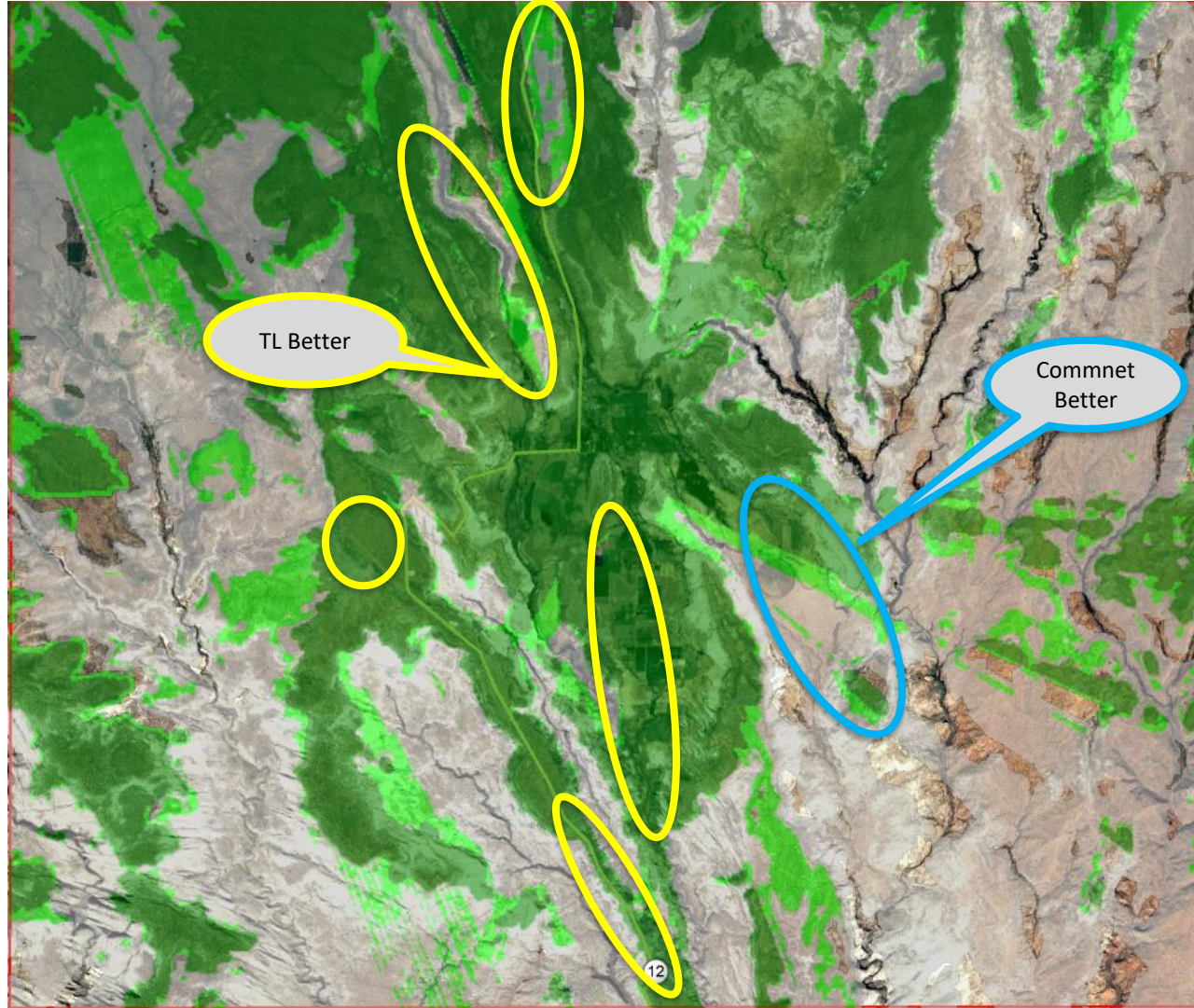
Thompson Ledge




45' RC AMSL 6,888 (+188')

Coverage Increase of
40% over Commnet Tower

The yellow ovals indicate
where Thompson Ledge
provides improved
coverage.

The blue ovals show where
Commnet provides
improved coverage.



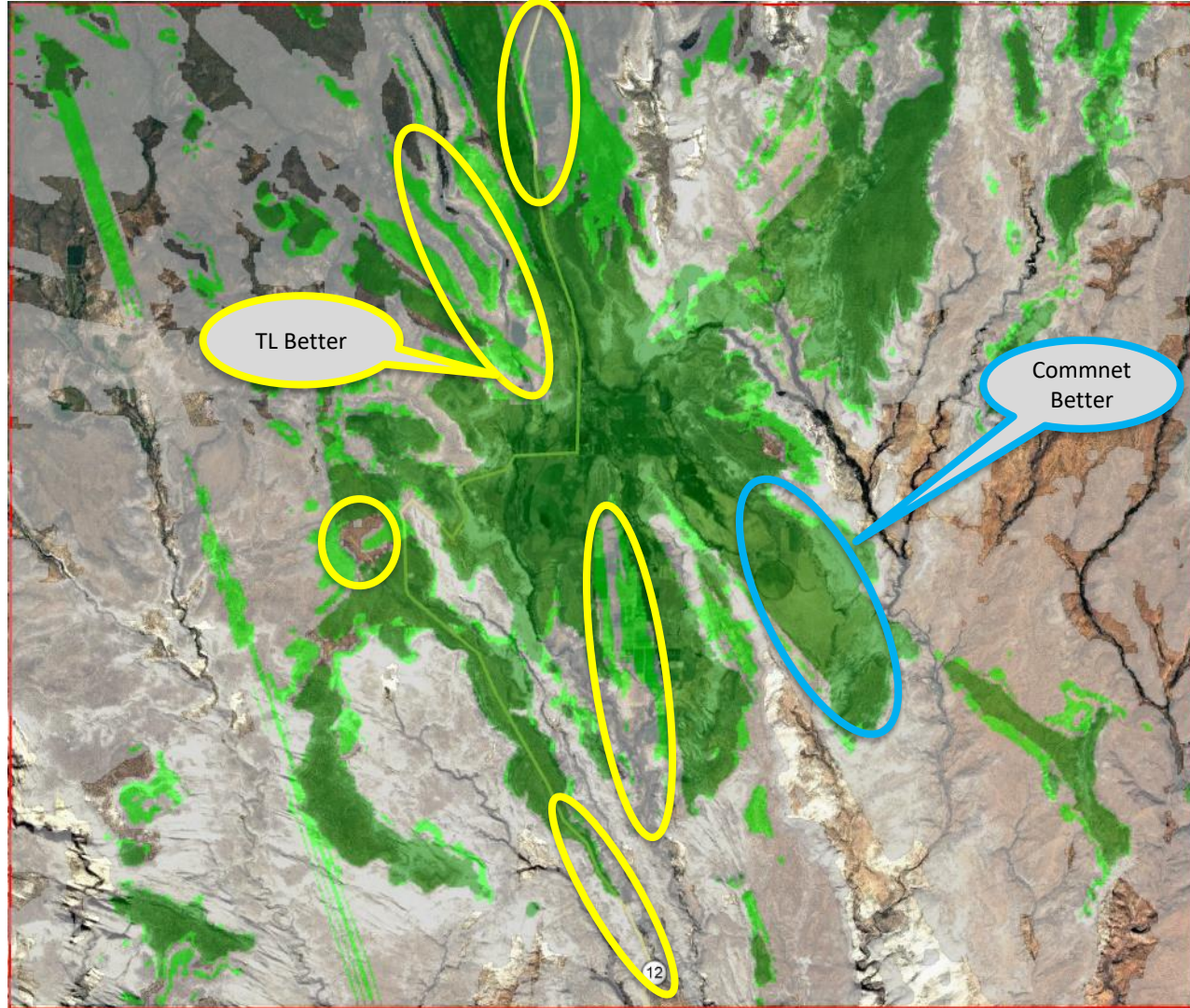
Phone bars	Color	Thompson Ledge
4 to 3 bars		31.50%
3 to 0 bars		9.88%
1 to 0 bars		41.10%




Commnet Tower

45' RC AMSL 6700'

The yellow ovals indicate where Thompson Ledge provides improved coverage.

The blue ovals show where Commnet provides improved coverage.



Phone bars	Color	Boulder Commnet
4 to 3 bars		17.29%
3 to 0 bars		7.64%
1 to 0 bars		45.13%

Thompson Ledge



Thompson Ledge 45' RC AMSL 6,888 (+188')

Thompson Ledge is a preferred RF location due to the height increase of 188'. This offers increased coverage in nearly all directions.

Coverage to the North

Expected coverage 6+ miles north along Highway 12 past Garkane access road. Coverage becomes spotty until you gain elevation and approach lookout point.

Coverage to the South East

Expected coverage 1+ mile, along Burr Trail. Coverage is low as the road is shadowed by Sugarloaf (6,942') blocks the road from coverage from Thompson ledge.

Coverage to the South West

Expected coverage 7+ miles along Highway 12. Coverage drops off 1.5 mile north of Lower Calf Creek Falls. There is improved coverage directly south of town covering the farming areas.

Commnet Tower



Commnet Tower 45' RC AMSL 6700'

Commnet tower is not as dominant as Thompson Ledge due to elevation differences.

Coverage to the North

Expected coverage 4+ miles north Highway 12 until you approach the Garkane access road. There is spotty coverage along Highway 12 as you exit the valley and gain elevation.

Coverage to the South East

Expected coverage 3+ miles along Burr Trail approximately 1 mile past farm pivot. Coverage is spotty as you continue heading east towards Deer Creek campground.

Coverage to the South West

Expected coverage 5+ miles along Highway 12. Coverage is limited as you pass the Calf Creek Viewpoint as terrain changes and blocks the RF signal.

Vicinity Map



Contact Information

Office Locations:

Southwest Region

2175 West 14th Street, Tempe, Arizona 85281

Rocky Mountain Region

1025 West 7th Avenue, Denver, Colorado 80204

NAME	ROLE/COVERAGE	EMAIL	MOBILE #
Chris Donnelly	Regional Engineering Manager	chris.donnelly@engineeringwireless.com	(602) 570.0101
Russell Stradling	Manager, Systems Architecture & Technology	russell.stradling@engineeringwireless.com	(480) 522.9280
Ray Trujillo	National Engineering Director	ray.trujillo@engineeringwireless.com	(469) 360.0000
Jon Szeliga	National Sales Director	jon.szeliga@engineeringwireless.com	(480) 315.8000
Chelsea Hood	General Manager	chelsea.hood@engineeringwireless.com	(480) 789.3262
Ken Clark	Founder & President	ken@engineeringwireless.com	(480) 443.4000



Thank You

engineeringwireless.com