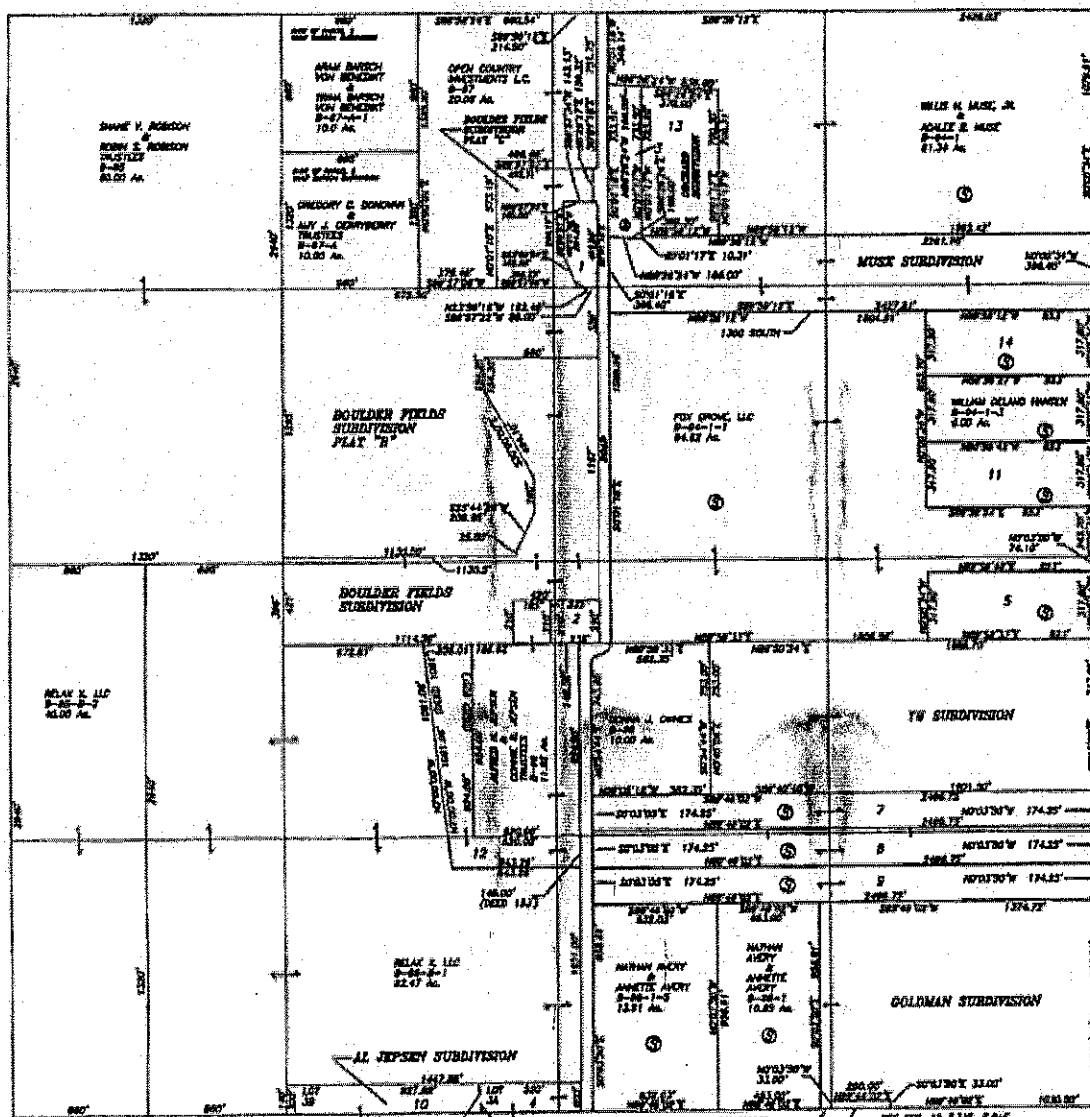


**BOULDER TOWN**  
**SECTION 1 T. 34 S. R. 04 E. S.L.B.&M.**

Ⓢ = SURVEY ON FILE



- 1-John Dal Pollock & Susan Elizabeth Pollock 8-27-1 7.48 Ac.
- 2-WHO COOMBS MARY JANE COOMBS 8-27-1 1.12 Ac.
- 3-NICHOL S. PETERSON TRUSTEE 8-24 2.79 Ac.
- 4-John Atwell POLICE TRUSTEE 8-21-1 6.78 Ac.
- 5-BOB BRONK, LLC 8-24-1-3 6.00 Ac.
- 6-DWANE K. ROBEK ROBEK & ROBEK TRUSTEE 8-21-1-1 0.72 Ac.
- 7-KEVIN MOORE 8-24-1-2 1.00 Ac.
- 8-TRACY CHURCH 8-24-1-3-1 1.00 Ac.
- 9-John A. Kelly ELEAN K. KELLY 8-24-1-3-2 10.00 Ac.
- 10-BLANK SPACING 8-24-1 2.44 Ac.
- 11-FLORENCE OF LORAIN, LLC 8-24-1-1 2.00 Ac.
- 12-MARION K. JEPSON CONNIE E. JEPSON TRUSTEE 8-23-2-1-1 2.77 Ac.
- 13-NUTMAN PETERSON 10-1 2.03 Ac.
- 14-ONE BELMONT NORTHMAN & ANNEBERRY WALK NORTHMAN TRUSTEE 8-24-1-1 2.00 Ac.

FILE: B-20		BY 2021 THIS HAS BEEN FOR PART OF AL JEPSON SUBDIVISION		NOTES:		U.S.T.C. APPROVAL DATE:		PLAT DEPARTMENT		BOULDER TOWN		BOOK	PAGE
REVISIONS	INITIAL	DATE						GARFIELD COUNTY, UTAH		SECTION 1 T.34S. R.04E.		2-22	
										BLANK PL. L.B.	DATE 12-24		SHEET 17-20

